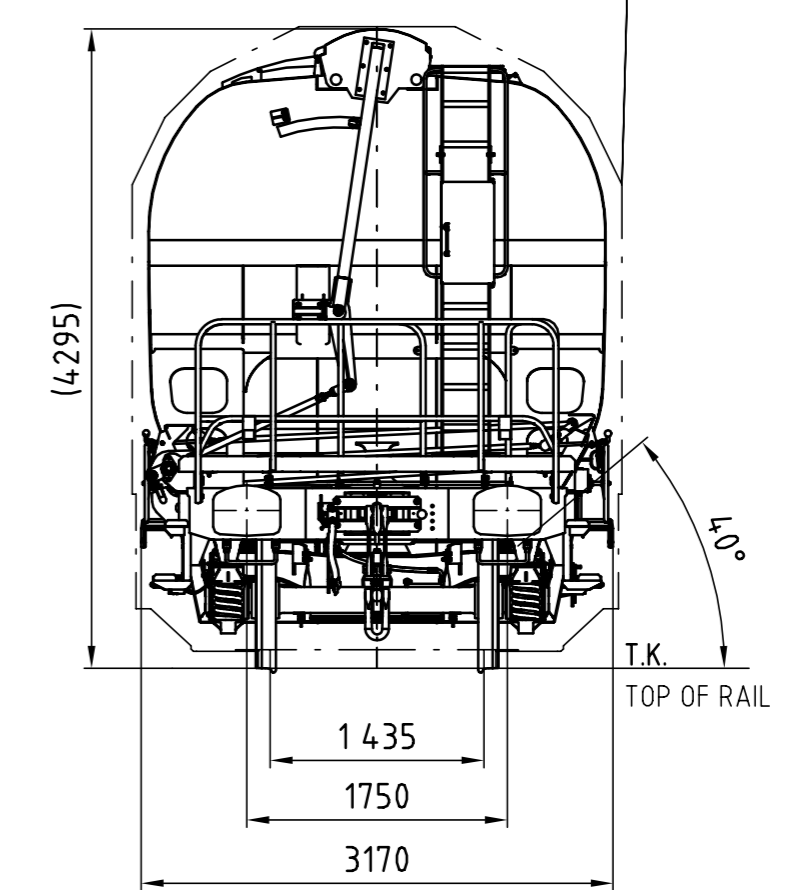


KIN. OBRYS G1/ G11 PODLA TSI WAG  
KIN. GAUGE G1/ G11 ACCORDING TO TSI-WAG



OZNACENIE RADU VOZNA ..... Tagnpps  
VYROBCA ..... TATRAVAGONKA POPRAD  
VERZIE VOZNA:  
VER. A: VAGON BEZ RUCNEJ BRZDY  
VER. B: VAGON S RUCNOU BRZDOU  
POCET PODVOZKOV A POCET NAPRAV PODVOZKA .... 2/2

DESIGNATION OF WAGON SERIES ..... Tagnpps  
MANUFACTURER ..... TATRAVAGONKA POPRAD  
WAGON VERSIONS:  
VER. A: THE WAGON WITHOUT THE HAND BRAKE  
VER. B: THE WAGON WITH THE HAND BRAKE  
NUMBER OF BOGIES AND NUMBER OF BOGIE AXLES ..... 2/2

TECHNICKE PARAMETRE:

HLAVNE PARAMETRE A CHARAKTERISTIKY ZATAZENIA  
ROZCHOD ..... 1435 mm  
VZDIALENOST OTOCNYCH CAPOV ..... 10000 mm  
RAZVOR PODVOZKA ..... 1800 mm  
DLZKA VOZNA CEZ NARAZNIKY ..... 14800 mm  
PRIEMER KOLESA (NOVE) ..... 920 mm

TECHNICAL PARAMETERS:

MAIN PARAMETERS AND LOADING CHARACTERISTICS  
TRACK GAUGE ..... 1435 mm  
DISTANCE BETWEEN BOGIE PIVOTS ..... 10000 mm  
BOGIE WHEEL BASE ..... 1800 mm  
WAGON LENGTH OVER BUFFERS ..... 14800 mm  
WHEEL DIAMETER (NEW) ..... 920 mm

LOZENIE:  
LOZNY OBJEM MENOVIKY ..... 95 m<sup>3</sup> (MIN. 94,5 m<sup>3</sup>)  
NAKLADACI OTVOR ..... 12420x600 mm  
POCET VYPUSTACICH ZASOBNIKOV ..... 2  
POCET VYPUSTACICH OTVOROV ..... 4  
VYSKA VYPUSTACICH OTVOROV NAD T. K. .... 355 mm  
SIRKA VYPUSTACICH OTVOROV ..... 1000 mm  
NAKLADANIE: NASYPOM ZVRCHU  
VYKLADANIE: Z VYPUSTACICH ZASOBNIKOV MEDZI KOLAJNICE  
DRUH NAKLADU: OBIлие  
MIN. TRATOVY OBLUK (SAMOSTATNY VOZEN) .... 35 m  
MIN. TRATOVY OBLUK (VLAKOVA SUPRAVA) .... 150 m  
LODNY TRAJEKT ..... 2°30', R=150 m  
ZVAZNY PAHOROK DEFINOVANY V TSI-WAG (UIIC 522-2)  
HMOTNOSTI:  
HMOTNOST PRAZDNEHO VOZNA ..... 20,5 t ±1,5%  
NOSNOST ..... 69,5 t  
MAX. HMOTNOST NA NAPRAVU ..... 22,5 t  
CELKOVA HMOTNOST LOZENEHO VOZNA ..... 90,0 t  
MEDZE ZATAZENIA:

LOADING:  
NOMINAL LOADING VOLUME ..... 95 m<sup>3</sup> (MIN. 94,5 m<sup>3</sup>)  
FILLING OPENING ..... 12420x600 mm  
NUMBER OF DISCHARGING RESERVOIRS ..... 2  
NUMBER OF DISCHARGING OPENINGS ..... 4  
HEIGHT OF DISCHARGING OPENINGS OVER TOP OF RAIL ..... 355 mm  
WIDTH OF DISCHARGING OPENINGS ..... 1000 mm  
LOADING: POURING FROM ABOVE  
UNLOADING: FROM DISCHARGING RESERVOIRS BETWEEN RAILS  
TYPE OF LOAD: GRAIN

VERZIA VOZNA:

	A	B	C	D
S	43,5	51,5	61,5	69,5

MAX. RYCHLOST Z HLADISKA POJAZDU ..... 120 km/h  
MAX. RYCHLOST Z HLADISKA BRZDY ..... 100 km/h

MIN. TRACK CURVE (SINGLE WAGON) ..... 35 m  
MIN. TRACK CURVE (TRAIN SET) ..... 150 m  
FERRY BOAT ..... 2°30', R=150 m  
HUMP DEFINED IN TSI-WAG (UIIC 522-2)  
MASSE:  
MASS OF EMPTY WAGON ..... 20,5 t ±1,5%  
TONNAGE ..... 69,5 t  
MAX. AXLE LOAD ..... 22,5 t  
MASS OF LOADED WAGON ..... 90,0 t  
LOADING LIMITS:  
WAGON VERSION:

	A	B	C	D
S	43,5	51,5	61,5	69,5

MAX. SPEED REGARDING RUNNING GEAR ..... 120 km/h  
MAX. SPEED REGARDING BRAKE ..... 100 km/h

PODVOZOK:  
TYP: Y25 Lsi-C-K; Y25 Lsif-C-K; 22,5 t  
BRZDA KOMPAKTNA IBB10  
DVOJKOLESIE: BA 303

BOGIE:  
TYPE: Y25 Lsi-C-K; Y25 Lsif-C-K; 22,5 t  
COMPACT BRAKE IBB10  
WHEELSET: BA 303

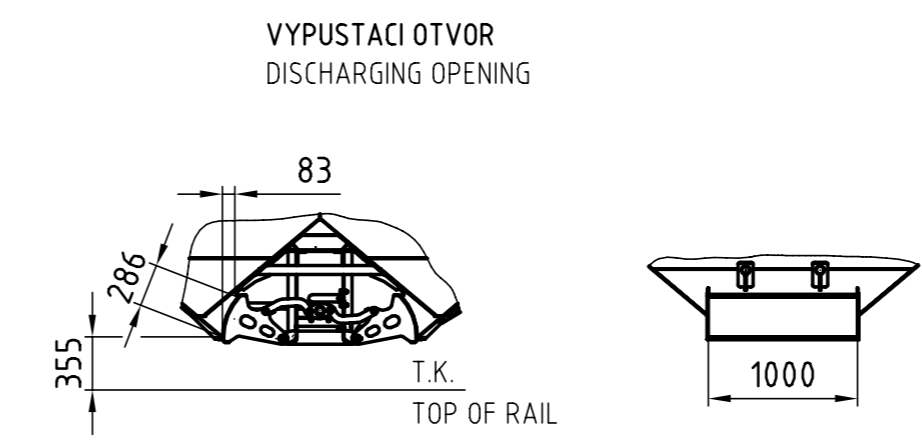
TAHADLOVE A NARAZACIE ZARIADENIE:  
NEPRIEBEZNE TAHADLOVE ZARIADENIE: 1500 kN  
TAHADLOVY HAK: 1500 kN  
ZAVITOVE SPRIAHADLO: 1350 kN  
NARAZNIKY: KATEGORIA A, ZDVIH 105 mm, DLZKA 620 mm,  
TANIER 450x340 mm

DRAWING AND BUFFING GEAR:  
UNCONTINUOUS DRAWING GEAR: 1500 kN  
DRAWING HOOK: 1500 kN  
SCREW COUPLING: 1350 kN  
BUFFERS: CATEGORY A, STROKE 105mm, LENGTH 620 mm,  
HEAD 450x340 mm

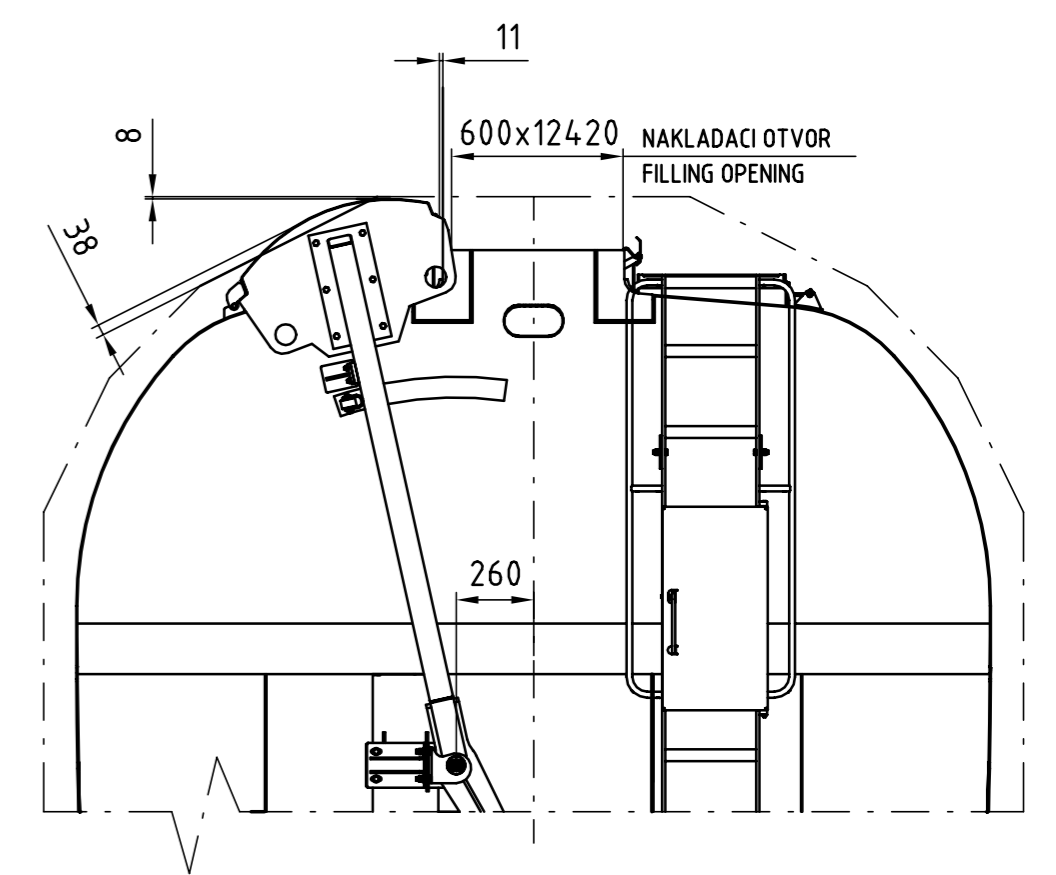
BRZDA:  
VZDUCHOTLAKOVA  
TYP: WABTEC MH-GP-A (K)  
BRZDOVE KLATIKY - KOMPOZITNE "K": 1xBgu (2x250), C810  
RUCNA BRZDA: OVLADANA ZO ZEME, UMIESTNENA V PODVOZKU

BRAKE:  
AIR-COMPRESSED  
TYPE: WABTEC MH-GP-A (K)  
BRAKE BLOCKS - COMPOSITE "K": 1xBgu (2x250), C810  
HAND BRAKE: OPERATED FROM THE GROUND, INSTALLED IN THE BOGIE

POLOHA OTVORENEJ STRECHY VZHLADOM NA OBRYS VOZNA  
POSITION OF OPENED ROOF WITH RESPECT TO WAGON GAUGE  
OVLADACIA SILA PRE OVLADANIE STRECHY: MAX. 200 N  
CONTROL FORCE FOR ROOF: MAX. 200 N



OVLADACIA SILA PRE OVLADANIE VYSYPKY V LOZENOM STAVE: MAX. 250 N  
CONTROL FORCE FOR HOPPER IN LOADED CONDITION: MAX. 250 N  
OVLADACIA SILA PRE OVLADANIE VYSYPKY V PRAZDNOM STAVE: MAX. 170 N  
CONTROL FORCE FOR HOPPER IN EMPTY CONDITION: MAX. 170 N



TECHNICKE PREVEDENIE ODPOVEDA SCHVALENEMU TYPOVEMU VYKRESU  
TECHNICAL EXECUTION CORRESPONDS TO THE APPROVED TYPE DRAWING

N-410-00-00-00-0

Index	Revision	Date	Name
Elab. by	CIZIK	2023-02	Stand. off.
Checked by	ADAMKOVIC	2023-02	Techn.
Approved by			Weld. techn.
Name			Date
Name			Date
Language code			sk_en
Name			4-NAPR.VYSYPNY VOZEN NA PREPRAVU OBIлие Tagnpps
Name			4-AXLE DISCHARGING WAGON FOR TRANSPORTATION OF GRAIN Tagnpps
Drawing No. Customer/Supplier			N-410-00-00-00-5
Sheet No. 1/1			WASCOSA

Weitergabe sowie Vervielfältigung dieses Dokuments, Verwertung und Mitteilung seines Inhalts sind verboten, soweit nicht ausdrücklich gestattet. Zuwiderhandlungen verpflichten zu Schadenersatz. Alle Rechte für den Fall der Patent-, Gebrauchsmuster- oder Geschmacksmusterertragung vorbehalten.

Nicht von der Zeichnung messen, Zweifelstelle konsultieren. Nemerat z výkresu, pochybnosti konzultovať.